

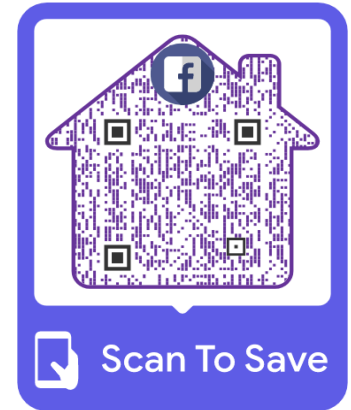


MANDURAH'S INN, MALAPACUA

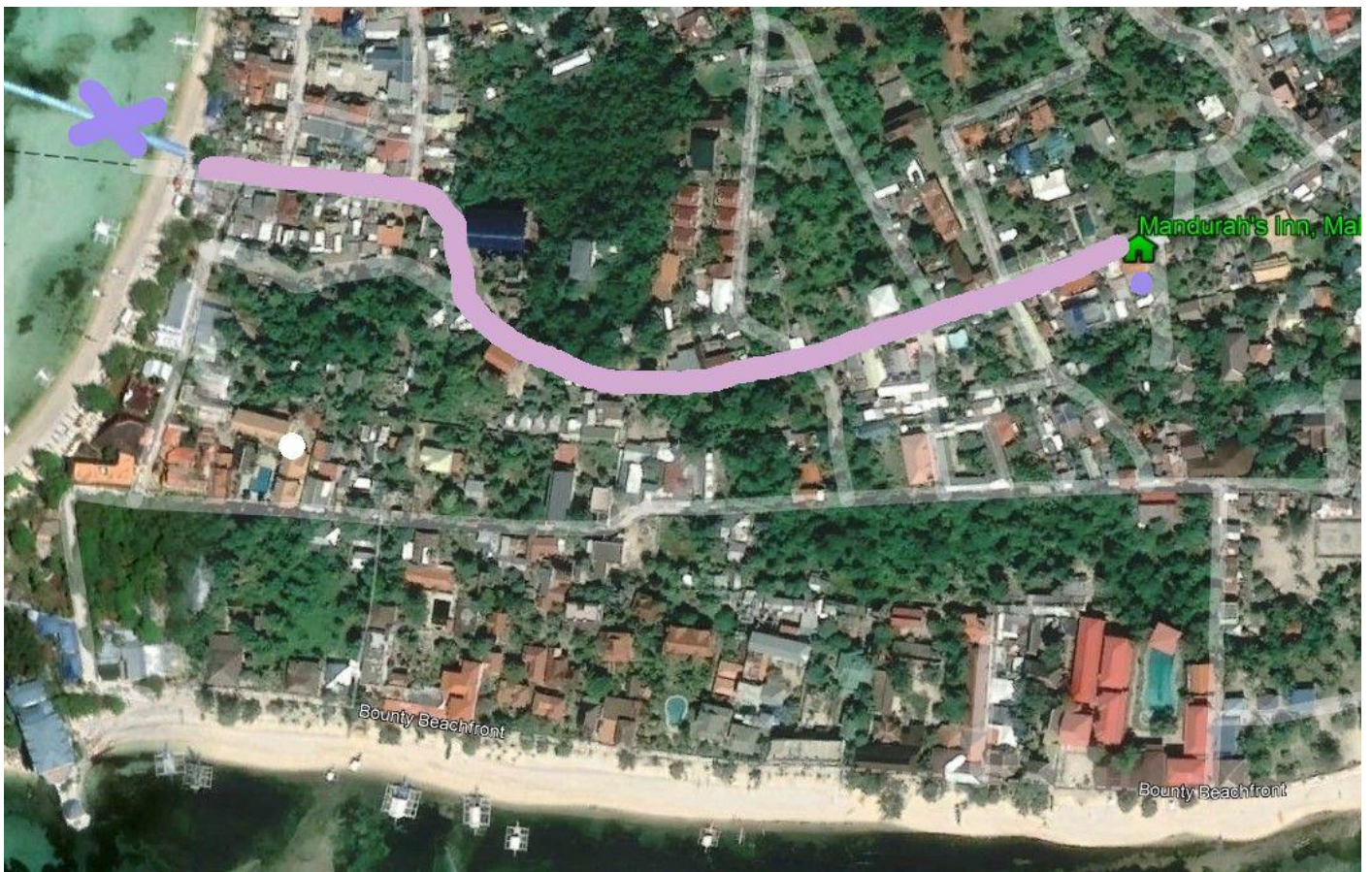


GOOGLE MAPS QR CODE

Zoom in to see us more clearly.



Mandurahs Inn



From Malapascua port simply keep walking along the concrete road in front of you, staying to the right if you are unsure.

We are approximately 500m from the port, and about 50 metres from the mercado.

When you see the purple and white buildings on your right-hand side you are here.

HOW TO GO FROM MAYA NEW RORO PORT TO MALAPASCUA

There are only two ways to go from Maya New Roro Port to Malapascua.

Public boat. P200 per person plus P75 environmental fee per person.

Private boat. P2,000 for the boat plus P75 environmental fee per person.

The boat trip takes about 40 minutes. They can be a bit noisy but it is not too bad.

You will need to walk up a narrow wooden ramp onto the boat. The same to get off.

The boat will provide a bamboo pole for support.

Porters are available to load your bags onto the boat – **check the fee first.**

The public boats leave about every 30 minutes. If they do not have ten passengers they will wait for more passengers or they may even cancel the boat and you will have to wait for the next one.

Sometimes, they will ask you to pay an additional amount to make up for there not being ten passengers.

It is your choice to pay or to wait for another boat.

Be at the port before 5PM to ensure that there is a boat to Malapascua, otherwise you will have to spend the night in Daanbantayan.

ARRIVAL AT MALAPASCUA PORT

Normally you will arrive at the port at Logon Beach.

In bad weather the boat captain may decide to go to Bounty Beach.

From Malapascua port simply keep walking along the concrete road in front of you, staying to the right if you are unsure.

We are approximately 500m from the port, and about 50 metres from the mercado.

When you see the purple and white buildings on your right-hand side you are here.

If you contact us, we can meet you at the port. The earlier you do this the easier it makes it for everyone.

CANVASSER'S AT PORT

When you arrive in Malapascua it is possible that some CANVASSER will try to talk you into changing your accommodation/reservation and bring you to another place instead of Mandurah's Inn.

They are not your friend. They earn a commission for this, and many of them will say almost anything to get you to go to a different place.

Don't let them bother you and just tell them to bring you to our Mandurah's Inn. Everyone knows where it is.

If you send us a text message when you arrive at Maya New Roro Port we will organise someone to meet you at the port and guide you here.

We can discuss whether you want to ride a motorbike, approximately P50 per person and whether you need additional transport for your luggage.

Facebook:	Mandurah's Inn, Malapascua (don't forget the ' in Mandurah's 😊)
Mobile:	0917 921 6507
Whatsapp	+63 917 921 6507
Mobile:	0969 524 4757

For further contact information and map please refer to QR codes attached.

FROM AIRPORT/CEBU CITY TO MAYA NEW RORO PORT TO MALAPASCUA

PRIVATE VEHICLE AND PRIVATE BOAT – Quicker, easier, more comfortable and relaxed.

The easiest, most comfortable and quickest way to reach Malapascua is by direct transfer by car or van direct from the airport or Cebu City to Maya New Roro Port, then a private boat direct to Malapascua.

Normally, we can arrange to pick you up at the Airport and transfer you directly to Mandurah's Inn.

The cost varies depending on the number of people and the amount of luggage you have.

Please contact us for more information on pricing.

After your arrival at the airport you have to pass through Immigration then get your luggage.

After passing customs go straight to the Main Exit Door. When you leave the airport's Main Exit on the other side of the street there is a fence with a security guard.

This is the waiting zone for people picking up arriving passengers - we will be waiting for you there..

We will have a white Din A4/A3 Signboard/paper written with the words "MANDURAH'S INN, Malapascua"

When you indicate that you have seen us, we are allowed to come to you and help you.

It's a little bit complicated, but that's the AIRPORT RULES to keep the Exit of the Airport hall free from too much traffic.

Depending on traffic the vehicle trip is 3-4 hours

If you ordered the private Boat transfer then it will be waiting at the port for you.

PUBLIC BUS OR VAN AND BOAT – Longer, less comfortable and for more experienced or adventurous traveller.

MAKE SURE YOU HAVE ENOUGH TIME TO GO FROM THE AIRPORT TO BUS TERMINAL TO MAYA BEFORE 5PM

From Mactan Airport take a taxi to the "Northern Bus Terminal". This takes approximately 25minutes depending on the traffic. If you would rather take a metered taxi, which are more economical than the private ones waiting at the arrival gate, walk up the ramp to the departures area and hail a white street taxi, make sure they put the meter on.

From bus terminal to Maya Roro New Port.

Buses to Maya New Roro Port leave around every half hour. The van's leave when they are full. Not all buses have air conditioning. The air-conditioned buses stop less and are more comfortable, but you may have to wait for one. The air-conditioned bus costs slightly more.

You can check Ceres Bus Liner for up-to-date bus timetables.

The bus trip will take at least 4 hours depending on how often it stops for passengers.

Maya New Roro Port to Malapascua

Refer above.

Be at the port before 5PM to ensure that there is a boat to Malapascua, otherwise you will have to spend the night in Daanbantayan.

If you are leaving the airport around noon, you possibly will not make the last boat.

OTHER INFORMATION:

CANVASSER'S AT PORT

When you arrive in Malapascua it is possible that some CANVASSER will try to talk you into changing your accommodation/reservation and bring you to another place instead of Mandurah's Inn.

They are not your friend. They earn a commission for this, and many of them will say almost anything to get you to go to a different place.

Don't let them bother you and just tell them to bring you to our Mandurah's Inn. Everyone knows where it is.

If you send us a text message when you arrive at Maya New Roro Port we will organise someone to meet you at the port and guide you here.

We can discuss whether you want to ride a motorbike, approximately P50 per person and whether you need additional transport for your luggage.

Facebook: Mandurah's Inn, Malapascua (don't forget the ' in Mandurah's 😊)

For contact information please refer to QR codes attached.

We are located 500m from the port. Please refer to directions attached.

RESTAURANT / COOKING FOOD

We DO NOT have our own restaurant at the moment.

We do have cooking facilities for the use of our guests, at a small additional cost.

We can also cook food for you that you purchase such as prawns, fish etc.

We serve breakfast on the top of the reception area.

We are less than 100m from the food markets.

There are a lot of restaurants on Malapascua, from the native cheap resto to exclusive restaurants

These include charcoal barbeque, pizzeria's, vegetarian options, food markets, carenderin (local food stalls) and bars.

INTERNET- WIFI

On Malapascua the internet is unfortunately unreliable.

We offer free WIFI on our premises.

There are some Restaurants and bars that offer WIFI.

Having a local data plan through Smart or Globe is recommended.

MONEY

There is an ATM located right next to our premises.

There is also ML Hullier and Palawan Pawnshop on the island

WATER

Malapascua is a small island with no natural water source. All water is from wells on the island.

It is not advisable to drink the tap water unless you are acclimatised

Stick to bottled water.

Mandurah's Inn provides drinking water for your use.

PESTS

If you are prone to mosquito bites then be sure to bring repellent with you.

If you forget you can buy it here on the island.

The mosquitoes are most active at sunset; this is a dengue and malaria free region.

Although there are a lot of tropical bugs on the island, there are no dangerous or venomous ones.

There are no snakes.

Geckos are a regular feature in our resort and are a natural predator of the mosquito.

What to bring for VACATION and what to wear

CLIMATE

The Philippines has a climate that demands careful thought when planning a trip. Visitors to the Philippines should avoid taking a lot of luggage. Carting baggage between buses, taxis, train stations and hotels can be hard work in the area's high humidity.

The tropical climate of the Philippines keeps the weather averaging from 28-32 degrees Celsius (about 86 degrees Fahrenheit). It rains regularly on Malapascua; however, the humidity is not as high as many other places.

What to Wear/What Not to Wear

Consider packing multiple swimsuits as your clothing might not always dry overnight.

Bathing suits, shorts and tank tops are appropriate attire for the beach or at your resort.

On the island flip flops are fine. Normal shoes may be an issue with the sand.

HEALTH AND SAFETY

The tropics often means mosquitoes, making insect repellent a must.

Some people prefer to buy insect spray when they arrive, thinking that a local repellent will be more effective against local pests, but this is not always a good plan. Insect repellents in other countries can contain chemicals that have been banned in Western countries.

SUN PROTECTION – BE SUNSMART

Protect yourself in **five ways** from skin cancer



SLIP



SLOP



SLAP



SEEK



SLIDE

SLIP, SLOP, SLAP and now SEEK, SLIDE. - **SLIP** on a shirt or rash guard. **SLOP** on sunblock. **SLAP** on a sun hat.

Being equatorial, the sun may be stronger than you are used to.

Bring a sunscreen with a higher SPF than you do at home and be sure to pack plenty of it. Make certain to bring beach cover-ups and broad-brimmed hats and a pair of UV-protection sunglasses to protect yourself from sunburn.

Be prepared for rain with a lightweight raincoat and an umbrella. A waterproof bag or pouch can keep your valuables dry in the event of unexpected rain. Also, it is very handy on a boat or when diving.

If your skin is particularly sensitive to the sun, bring UV-protected clothing.

SCUBA DIVING AND SNORKELLING

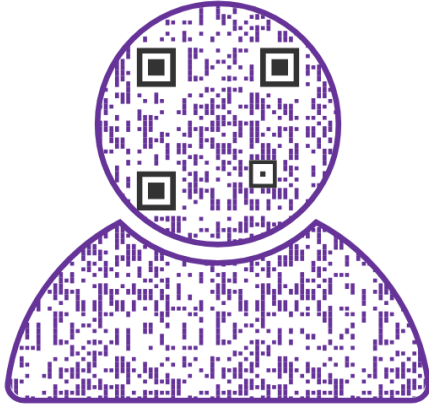
Malapascua is predominately PADI and SSI.

BRING YOUR SCUBA CERTIFICATES WITH YOU.

Most dive shops cater to customers from you having all your own equipment to they will supply everything and anywhere in between that you like.

Personally, I prefer to at least bring my own mask but that is up to you.

A dry bag is also a very good idea for you phone etc.



**Add Mandurahs Inn
to your contact list**



**Google Maps
Zoom In**

MANDURAH'S INN, MALAPASCUA

Great Hospitality, Clean and Affordable Rooms
 Private, Group and Backpacker Rooms
 Hot Showers – Aircon or Fan

CHONA D. LOVINO
MANAGER

0917 921 6507
 Globe



0969 524 4757
Smart

Facebook @ [MandurahsInn](#)
MandurahsInn@gmail.com

WhatsApp
+63 917 921 6507



Mandurahs Inn

Add us on Facebook



Message us on Whatsapp